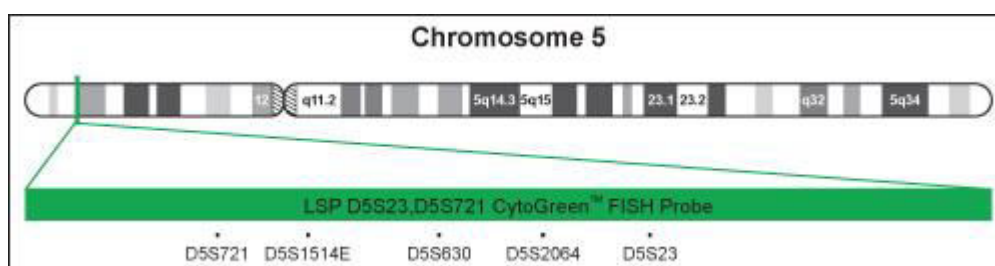


LSP D5S23, D5S721 FISH Probe Cat No CT-LSP053

Locus Specific Probe for D5S23, D5S721 Region

The D5S23, D5S721 FISH Probe is designed to detect the human *D5S23*, *D5S721* region located on chromosome band 5p15.2.



The D5S23, D5S721 FISH probe is labeled with CytoGreen. CytoGreen is a fluorophore with an excitation peak at 495nm and emission peak at 518nm, giving it an orange fluorescent signal with the appropriate filters.

The D5S23, D5S721 FISH probe hybridizes to chromosome 5 in both metaphase and interphase cells. After hybridizing with normal human peripheral blood lymphocyte samples, two distinct green fluorescent spots are observed in the interphase nuclei, each spot corresponding to the 5p15.2 region on the chromosome 5. In metaphase cells, a “doublet” or “split signal” may appear on chromosomal region 5p15.2. Each signal within the doublet represents one of the two sister chromatids present in the replicated chromosome 5.

* CytoTest shall not be responsible for patent infringement or any other violation that may occur with the use of this product.

Analyte Specific Reagent. Analytical and performance characteristics are not established.

Life Technologies (India) Pvt Ltd.

306, Agarwal City Mall, Road 44, Pitampura, Delhi - 110034 (India)

Tel: +91-11-4220-8000; 4220-8111; 4220-8222 Fax: +91-11-4220-8444, Mobile: +91-98105-21400

Email - customerservice@lifetechindia.com | customerservice@atzlabs.com