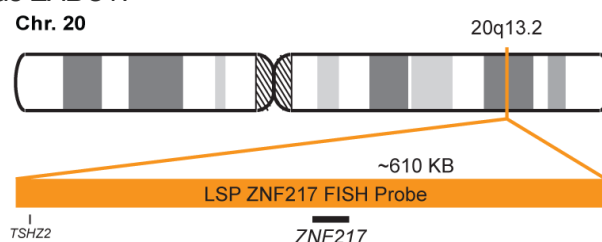


LSP ZNF217 FISH Probe Cat No CT-LSP074

Locus Specific Probe for ZNF217 Gene

The ZNF217 FISH Probe is designed to detect the human ZNF217 gene located on chromosome band 20q13.2. ZNF217 is also known as ZABC1.



The ZNF217 FISH probe is labeled with CytoOrange. CytoOrange is a fluorophore with an excitation peak at 551nm and emission peak at 575nm, giving it an orange fluorescent signal with the appropriate filters.

The ZNF217 FISH probe hybridizes to chromosome 20 in both metaphase and interphase cells. After hybridizing with normal human peripheral blood lymphocyte samples, two distinct orange fluorescent spots are observed in the interphase nuclei, each spot corresponding to the 20q13.2 region on the chromosome 20. In metaphase cells, a “doublet” or “split signal” may appear on chromosomal region 20q13.2. Each signal within the doublet represents one of the two sister chromatids present in the replicated chromosome 20.

* CytoTest shall not be responsible for patent infringement or any other violation that may occur with the use of this product.

Analyte Specific Reagent. Analytical and performance characteristics are not established.

Life Technologies (India) Pvt Ltd.

306, Agarwal City Mall, Road 44, Pitampura, Delhi - 110034 (India)

Tel: +91-11-4220-8000; 4220-8111; 4220-8222 Fax: +91-11-4220-8444, Mobile: +91-98105-21400

Email - customerservice@lifetechindia.com | customerservice@atzlabs.com