

TERC/PTGS2/CCP7 FISH Probe Kit

Introduction

The TERC/PTGS2/CCP7 FISH Probe Kit is designed to detect the human *TERC* and *PTGS2* genes located on chromosome band 3q26.2 and 1q31.1, respectively, along with the number of chromosome 7 copies per cell. Abnormal expression of both genes (*TERC* – also known as *TR*, *hTR*, *TRC3*, *DKCA1*, *PFBMFT2* or *SCARNA19* – and *PTGS2* – also known as *COX2*, *COX-2*, *PHS-2*, *PGG/HS*, *PGHS-2*, *hCox-2* or *GRIPGHS*) has been observed in cervical carcinoma, various other solid tumor types, and other conditions.

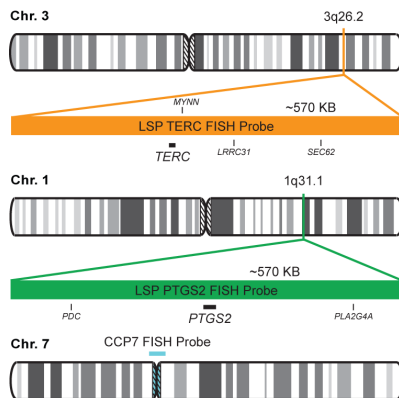
Intended Use

To measure the copy number of the human *TERC* and *PTGS2* gene located on chromosome band 3q26.2 and 1q31.1, respectively.

Cont.	Color
-------	-------

LSP TERC FISH Probe	CytoOrange CytoGreen CytoAqua
LSP PTGS2 FISH Probe	
CCP7 FISH Probe	

Probe Design



LSP TERC FISH Probe covers a chromosomal region which includes the entire *TERC* gene. LSP PTGS2 FISH Probe covers a chromosomal region which includes the entire *PTGS2* gene. CCP7 FISH Probe, derived from chromosome 7-specific alpha satellite DNA, is designed to serve as a control to determine the number of chromosome 7 copies per cell.

Not to Scale

Cat. No.	Volume
----------	--------

CT-PAC005-10-OGA	10 Tests (100 µL)
------------------	-------------------

Signal Pattern Interpretation

Normal Pattern	Abnormal Pattern
2O + 2G + 2A	Other Patterns

- 1) Shay JW & Bacchetti S. *Eur J Cancer*. 33(5):787-91 (1997).
- 2) Heselmeyer K, et al. *Proc Natl Acad Sci U S A*. 93(1):479-84 (1996).
- 3) Zha S, et al. *Cancer Lett*. 215(1):1-20 (2004).
- 4) Rask K, et al. *Mol Cancer*. 16;5:62 (2006).
- 5) Konstantinopoulos PA, et al. *Int J Colorectal Dis*. 22(1):57-68 (2007).



CytoTest Inc.
9430 Key West Ave., Suite 210
Rockville, MD 20850, USA

* CE IVD only available in certain countries. All other countries are either ASR or RUO. Please contact your local dealer or our headquarters for more information.

India Contact:

Life Technologies (India) Pvt. Ltd.

306, Aggarwal City Mall, Opposite M2K Pitampura, Delhi – 110034 (INDIA). Ph: +91-11-42208000, 42208111, 42208222, Mobile: +91-9810521400, Fax: +91-11-42208444

Email: customerservice@lifetechindia.com Website: www.lifetechindia.com