

## MDM2/CCP12 FISH Probe Kit

### Introduction

The MDM2/CCP12 FISH Probe Kit is designed to detect the human *MDM2* gene located on chromosome band 12q15, along with the number of chromosome 12 copies per cell. Abnormal expression of the *MDM2* gene – also known as *HDMX*, *hdm2* or *ACTFS* – has been observed in soft tissue sarcomas and osteosarcomas.

### Intended Use

To measure the copy number of the human *MDM2* gene located on chromosome band 12q15.

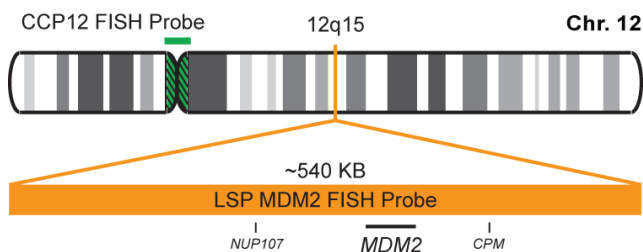
### Cont.

LSP MDM2 FISH Probe  
CCP12 FISH Probe

### Color

CytoOrange  
CytoGreen

### Probe Design



Not to Scale

LSP MDM2 FISH Probe covers a chromosomal region which includes the entire *MDM2* gene. CCP12 FISH Probe, derived from chromosome 12-specific alpha satellite DNA, is designed to serve as a control to determine the number of chromosome 12 copies per cell.

### Cat. No.

CT-PAC019-10-OG

### Volume

10 Tests (100 µL)

### Signal Pattern Interpretation

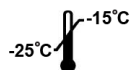
#### Normal Pattern

2O + 2G

#### Abnormal Pattern

Other Patterns

- 1) Oliner JD, et al. *Nature*. 358(6381):80-3 (1992).
- 2) Watanabe T, et al. *Leuk Lymphoma*. 21(5-6):391-7 (1996)
- 3) Honda R, et al. *FEBS Lett*. 420(1):25-7 (1997).
- 4) Momand J, et al. *Nucleic Acids Res*. 26(15):3453-9 (1998).
- 5) Bond GL, et al. *Cell*. 119(5):591-602 (2004).



CytoTest Inc.  
9430 Key West Ave., Suite 210  
Rockville, MD 20850, USA

\* CE IVD only available in certain countries. All other countries are either ASR or RUO. Please contact your local dealer or our headquarters for more information.

### India Contact:

#### Life Technologies (India) Pvt. Ltd.

306, Aggarwal City Mall, Opposite M2K Pitampura, Delhi – 110034 (INDIA). Ph: +91-11-42208000, 42208111, 42208222, Mobile: +91-9810521400, Fax: +91-11-42208444  
Email: [customerservice@lifetechindia.com](mailto:customerservice@lifetechindia.com) Website: [www.lifetechindia.com](http://www.lifetechindia.com)