

# DCC/CCP18 FISH Probe Kit

## Introduction

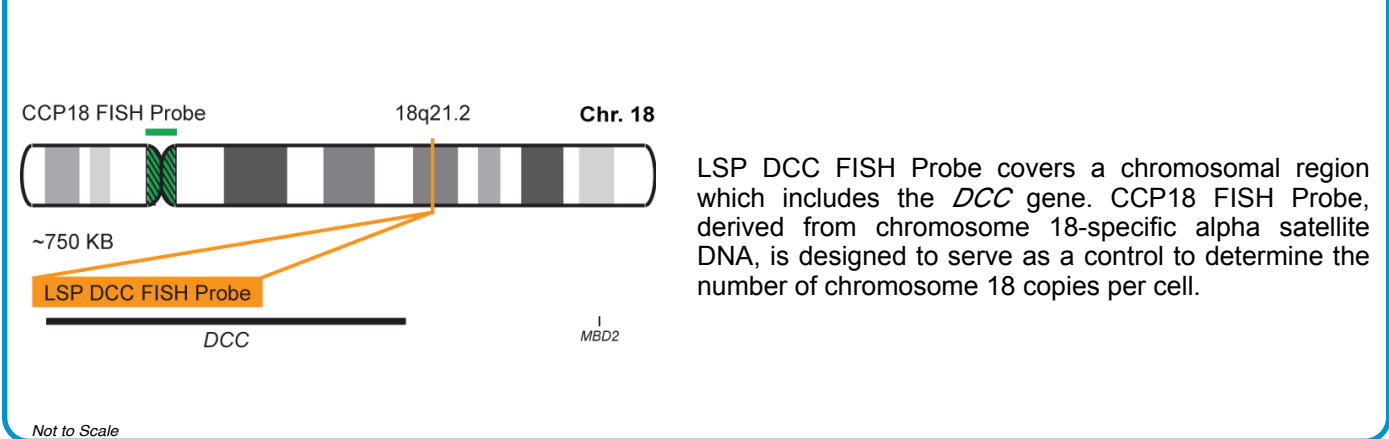
The DCC/CCP18 FISH Probe Kit is designed to detect the human *DCC* gene located on chromosome band 18q21.2, along with the number of chromosome 18 copies per cell. Abnormal expression of the *DCC* gene – also known as *CRC18*, *CRCR1*, *MRMV1*, *IGDCC1* or *NTN1R1* – has been observed in colorectal and many other cancer types.

**Intended Use**

To measure the copy number of the human *DCC* gene located on chromosome band 18q21.2.

Cont.	Color
LSP DCC FISH Probe CCP18 FISH Probe	CytoOrange CytoGreen

## Probe Design



Cat. No.	Volume
CT-PAC021-10-OG	10 Tests (100 µL)

Signal Pattern Interpretation	
<u>Normal Pattern</u>	<u>Abnormal Pattern</u>
2O + 2G	Other Patterns

- 1) Saegusa M, et al. *Br J Cancer*. 82(3):571-8 (2000).
- 2) Koren R, et al. *Breast Cancer Res Treat*. 80(2):215-20 (2003).
- 3) Dekel Y, et al. *BJU Int*. 93(6):867-9 (2004).
- 4) Hirata H, et al. *Cancer Genet Cytogenet*. 163(2):101-5 (2005).
- 5) Carvalho AL, et al. *Cancer Res*. 66(19):9401-7 (2006).



CytoTest Inc.  
9430 Key West Ave., Suite 210  
Rockville, MD 20850, USA

\* CE IVD only available in certain countries. All other countries are either ASR or RUO. Please contact your local dealer or our headquarters for more information.

**India Contact:**

**Life Technologies (India) Pvt. Ltd.**

306, Aggarwal City Mall, Opposite M2K Pitampura, Delhi – 110034 (INDIA). Ph: +91-11-42208000, 42208111, 42208222, Mobile: +91-9810521400, Fax: +91-11-42208444  
Email: [customerservice@lifetechindia.com](mailto:customerservice@lifetechindia.com) Website: [www.lifetechindia.com](http://www.lifetechindia.com)