

## CISD2/CCP4 FISH Probe Kit

### Introduction

The CISD2/CCP4 FISH Probe Kit is designed to detect the human *CISD2* gene located on chromosome band 4q24, along with the number of chromosome 4 copies per cell. Abnormalities in *CISD2* – also known as *ERIS*, *WFS2*, *ZCD2*, *NAF-1* or *Miner1* – have been observed in liver cancer and other malignancies. The gene has been associated with Wolfram Syndrome.

### Intended Use

To measure the copy number of the human *CISD2* gene located on chromosome band 4q24.

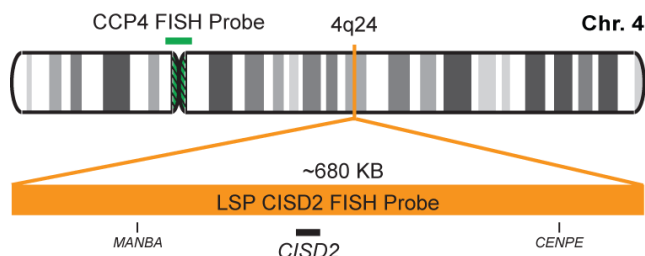
### Cont.

LSP CISD2 FISH Probe  
CCP4 FISH Probe

### Color

CytoOrange  
CytoGreen

### Probe Design



Not to Scale

LSP CISD2 FISH Probe covers a chromosomal region which includes the entire *CISD2* gene. CCP4 FISH Probe, derived from chromosome 4-specific alpha satellite DNA, is designed to serve as a control to determine the number of chromosome 4 copies per cell.

### Cat. No.

CT-PAC024-10-OG

### Volume

10 Tests (100 µL)

### Signal Pattern Interpretation

#### Normal Pattern

2O + 2G

#### Abnormal Pattern

Other Patterns

- Chen YF, et al. *Ann N Y Acad Sci.* 1201:58-64 (2010).
- Rigoli L & Di Bella C. *Curr Opin Pediatr.* 24(4):512-7 (2012).
- Wang CH, et al. *Hum Mol Genet.* 23(18):4770-85 (2014).
- Wang CH, et al. *Free Radic Res.* 48(9):1109-14 (2014).
- Liu L, et al. *Med Oncol.* 31(9):183 (2014).



CytoTest Inc.  
9430 Key West Ave., Suite 210  
Rockville, MD 20850, USA

\* CE IVD only available in certain countries. All other countries are either ASR or RUO. Please contact your local dealer or our headquarters for more information.

### India Contact:

#### Life Technologies (India) Pvt. Ltd.

306, Aggarwal City Mall, Opposite M2K Pitampura, Delhi – 110034 (INDIA). Ph: +91-11-42208000, 42208111, 42208222, Mobile: +91-9810521400, Fax: +91-11-42208444  
Email: [customerservice@lifetechindia.com](mailto:customerservice@lifetechindia.com) Website: [www.lifetechindia.com](http://www.lifetechindia.com)