

## ERBB3/CCP12 FISH Probe Kit

### Introduction

The ERBB3/CCP12 FISH Probe Kit is designed to detect the human *ERBB3* gene located on chromosome band 12q13.2, along with the number of chromosome 12 copies per cell. Abnormal expression of the *ERBB3* gene – also known as *HER3*, *LCCS2*, *ErbB-3*, *c-erbB3*, *erbB3-S*, *MDA-BF-1*, *c-erbB-3*, *p180-ErbB3*, *p45-sErbB3* or *p85-sErbB3* – has been observed in breast, ovarian, prostate, pancreatic, lung and other cancers, and other conditions.

### Intended Use

To measure the copy number of the human *ERBB3* gene located on chromosome band 12q13.2.

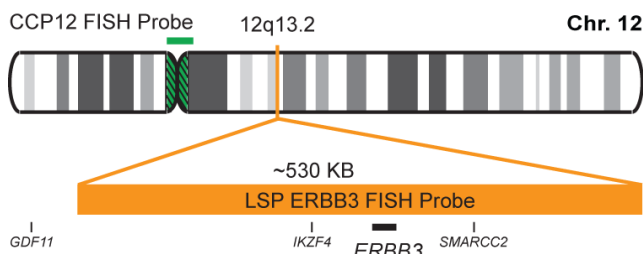
### Cont.

LSP ERBB3 FISH Probe  
CCP12 FISH Probe

### Color

CytoOrange  
CytoGreen

### Probe Design



Not to Scale

LSP ERBB3 FISH Probe covers a chromosomal region which includes the entire *ERBB3* gene. CCP12 FISH Probe, derived from chromosome 12-specific alpha satellite DNA, is designed to serve as a control to determine the number of chromosome 12 copies per cell.

### Cat. No.

CT-PAC029-10-OG

### Volume

10 Tests (100 µL)

### Signal Pattern Interpretation

#### Normal Pattern

2O + 2G

#### Abnormal Pattern

Other Patterns

- 1) Liu B, et al. *Int J Cancer*. 120(9):1874-82 (2007).
- 2) Sergina NV, et al. *Nature*. 445(7126):437-41 (2007).
- 3) Wang H, et al. *PLoS One*. 5(7):e11789 (2010).
- 4) Balko JM, et al. *Proc Natl Acad Sci U S A*. 109(1):221-6 (2012).
- 5) Wilken JA, et al. *Future Med Chem*. 4(4):447-69 (2012).



CytoTest Inc.  
9430 Key West Ave., Suite 210  
Rockville, MD 20850, USA

\* CE IVD only available in certain countries. All other countries are either ASR or RUO. Please contact your local dealer or our headquarters for more information.

### India Contact:

#### Life Technologies (India) Pvt. Ltd.

306, Aggarwal City Mall, Opposite M2K Pitampura, Delhi – 110034 (INDIA). Ph: +91-11-42208000, 42208111, 42208222, Mobile: +91-9810521400, Fax: +91-11-42208444  
Email: [customerservice@lifetechindia.com](mailto:customerservice@lifetechindia.com) Website: [www.lifetechindia.com](http://www.lifetechindia.com)