

CDK4/CCP12 FISH Probe Kit

Introduction

The CDK4/CCP12 FISH Probe Kit is designed to detect the human *CDK4* gene located on chromosome band 12q14.1, along with the number of chromosome 12 copies per cell. Abnormalities in *CDK4* – also known as *CMM3* or *PSK-J3* – occur in gliomas and sarcoma and in various other familial or sporadic tumor types.

Intended Use

To measure the copy number of the human *CDK4* gene located on chromosome band 12q14.1.

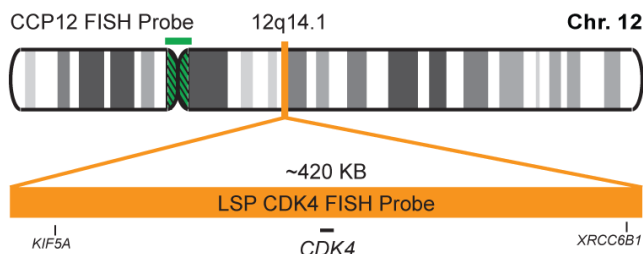
Cont.

LSP CDK4 FISH Probe
CCP12 FISH Probe

Color

CytoOrange
CytoGreen

Probe Design



Not to Scale

LSP CDK4 FISH Probe covers a chromosomal region which includes the entire *CDK4* gene. CCP12 FISH Probe, derived from chromosome 12-specific alpha satellite DNA, is designed to serve as a control to determine the number of chromosome 12 copies per cell.

Cat. No.

CT-PAC048-10-OG

Volume

10 Tests (100 µL)

Signal Pattern Interpretation

Normal Pattern

2O + 2G

Abnormal Pattern

Other Patterns

- 1) Khatib ZA, et al. *Cancer Res.* 53(22):5535-41 (1993).
- 2) Reifenberger G, et al. *Cancer Res.* 54(16):4299-303 (1994).
- 3) Sehgal A. *Semin Surg Oncol.* 14(1):3-12 (1998).
- 4) Soufir N, et al. *Hum Mol Genet.* 7(2):209-16 (1998).
- 5) Curtin JA, et al. *N Engl J Med.* 353(20):2135-47 (2005).



CytoTest Inc.
9430 Key West Ave., Suite 210
Rockville, MD 20850, USA

* CE IVD only available in certain countries. All other countries are either ASR or RUO. Please contact your local dealer or our headquarters for more information.

India Contact:

Life Technologies (India) Pvt. Ltd.

306, Aggarwal City Mall, Opposite M2K Pitampura, Delhi – 110034 (INDIA). Ph: +91-11-42208000, 42208111, 42208222, Mobile: +91-9810521400, Fax: +91-11-42208444
Email: customerservice@lifetechindia.com Website: www.lifetechindia.com