

## ASPSCR1-TFE3 Fusion/Translocation FISH Probe Kit

### Introduction

The ASPSCR1-TFE3 Fusion/Translocation FISH Probe Kit is designed to detect rearrangements involving the human *ASPSCR1* and *TFE3* genes located on chromosome bands 17q25.3 and Xp11.23, respectively. Fusion of *ASPSCR1* – also known as *TUG*, *ASPL*, *ASPS*, *RCC17*, *UBXD9*, *UBXN9* or *ASPCR1* – with the *TFE3* gene – also known as *TFEA*, *RCCP2*, *RCCX1* or *bHLHe33* – on the X chromosome has been observed in alveolar soft part sarcoma and a subset of renal cell carcinomas.

### Intended Use

To detect rearrangements involving the human *ASPSCR1* and *TFE3* genes located on chromosome bands 17q25.3 and Xp11.23, respectively.

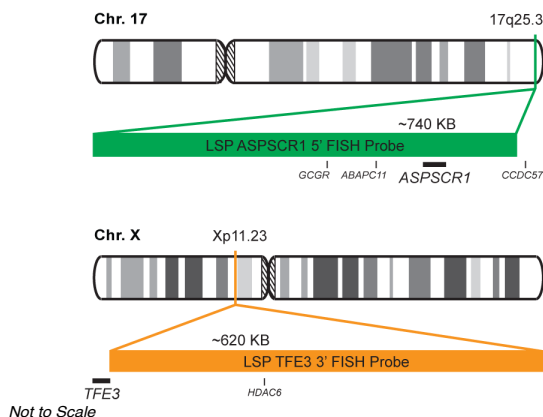
### Cont.

LSP ASPSCR1 5' FISH Probe  
LSP TFE3 3' FISH Probe

### Color

CytoGreen  
CytoOrange

### Probe Design



LSP ASPSCR1 5' FISH Probe covers the entire *ASPSCR1* gene and some genomic sequences adjacent to the 5' (start) and 3' (end) of the gene. LSP TFE3 3' FISH Probe covers the 3' (end) part and sequences downstream of the *TFE3* gene. The probe set is optimized to reveal translocations between the two genes.

### Cat. No.

CT-PAC061-10-GO

### Volume

10 Tests (100 µL)

### Signal Pattern Interpretation

#### Normal Pattern

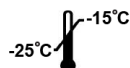
2O + 2G\*

#### Abnormal Pattern

Other Patterns

\*Overlapping orange and green signals can appear as yellow.

- 1) Malouf GG, et al. *Ann Oncol.* 21(9):1834-8 (2010).
- 2) Aulmann S, et al. *Histopathology.* 50(7):881-6 (2007).
- 3) Rao Q, et al. *Am J Surg Pathol.* 37(6):804-15 (2013).
- 4) Ladanyi M, et al. *Oncogene.* 20(1):48-57 (2001).
- 5) Argani P, et al. *Am J Pathol.* 159(1):179-92 (2001).



CytoTest Inc.  
9430 Key West Ave., Suite 210  
Rockville, MD 20850, USA

\* CE IVD only available in certain countries. All other countries are either ASR or RUO. Please contact your local dealer or our headquarters for more information.

### India Contact:

#### Life Technologies (India) Pvt. Ltd.

306, Aggarwal City Mall, Opposite M2K Pitampura, Delhi – 110034 (INDIA). Ph: +91-11-42208000, 42208111, 42208222, Mobile: +91-9810521400, Fax: +91-11-42208444  
Email: [customerservice@lifetechindia.com](mailto:customerservice@lifetechindia.com) Website: [www.lifetechindia.com](http://www.lifetechindia.com)