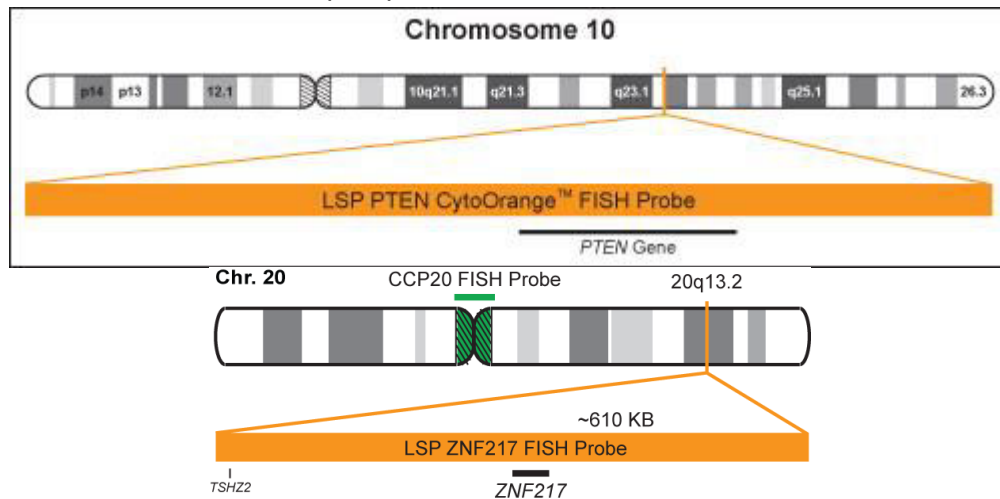


**ZNF217/CCP20 FISH Probe Kit** Cat No CT-PAC073

**Breast Cancer & Larynx Cancer & Other Tumor Types Diagnostic Kit**

The ZNF217/CCP20 FISH probe set is designed to detect copy number changes in the region of the human *ZNF217* gene located on chromosome band 20q13.2. The kit contains two differentially labeled probes: A Locus Specific Probe (LSP) covers a chromosomal region which includes the entire *ZNF217* gene. The other probe, CCP20, is derived from chromosome 6-specific pericentromeric DNA and is designed to serve as a control to determine the number of chromosome 6 copies per cell.



The probe is labeled with CytoOrange and CytoGreen. CytoOrange is a fluorophore with an excitation peak at 551 nm and emission peak at 575 nm, giving it an orange fluorescent signal with an appropriate filter; CytoGreen has an excitation peak at 495 nm and emission peak at 518 nm, giving it a green fluorescent signal with an appropriate filter.

\* CytoTest shall not be responsible for patent infringement or any other violation that may occur with the use of this product.

**Life Technologies (India) Pvt Ltd.**

306, Agarwal City Mall, Road 44, Pitampura, Delhi - 110034 (India)

Tel: +91-11-4220-8000; 4220-8111; 4220-8222 Fax: +91-11-4220-8444, Mobile: +91-98105-21400

Email - customerservice@lifetechindia.com | customerservice@atzlabs.com