

# SFPQ-TFE3 Fusion/Translocation FISH Probe Kit

## Introduction

The SFPQ-TFE3 Fusion/Translocation FISH Probe Kit is designed to detect rearrangements involving the human *SFPQ* and *TFE3* genes located on chromosome bands 1p34.3 and Xp11.23, respectively. Rearrangements between the two genes, the *TFE3* gene – also called *TFEA*, *RCCP2*, *RCCX1* or *bHLHe33*, have been observed in renal cell carcinoma subtypes and other tumor types.

### Intended Use

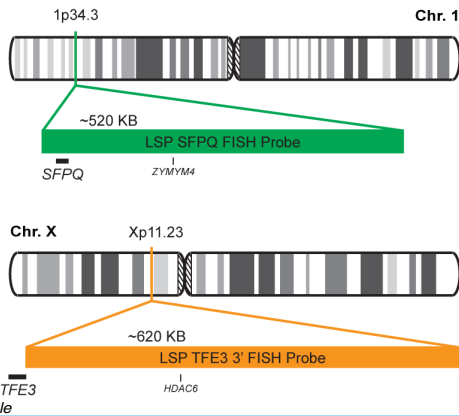
To detect rearrangements involving the human *SFPQ* and *TFE3* genes located on chromosome bands 1p34.3 and Xp11.23, respectively.

Cont.	Color
-------	-------

LSP SFPQ FISH Probe  
LSP TFE3 3' FISH Probe

CytoGreen  
CytoOrange

## Probe Design



LSP SFPQ 5' FISH Probe covers the entire *SFPQ* gene and some genomic sequences adjacent to the 5' (start) and 3' (end) portion of the gene. LSP TFE3 3' FISH Probe covers the 3' (end) part as well as sequences downstream of the *TFE3* gene. The probe set is optimized to reveal translocations between the two genes.

Cat. No.	Volume
----------	--------

CT-PAC095-10-GO

10 Tests (100 µL)

### Signal Pattern Interpretation

Normal Pattern

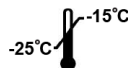
2O + 2G\*

Abnormal Pattern

Other Patterns

\*Overlapping orange and green signals can appear as yellow.

- 1) Malouf GG, et al. *Ann Oncol.* 21(9):1834-8 (2010).
- 2) Aulmann S, et al. *Histopathology.* 50(7):881-6 (2007).
- 3) Rao Q, et al. *Am J Surg Pathol.* 37(6):804-15 (2013).
- 4) Straub T, et al. *J Biol Chem.* 273(41):26261-4 (1998).
- 5) Clark J, et al. *Oncogene.* 15(18):2233-9 (1997).



CytoTest Inc.  
9430 Key West Ave., Suite 210  
Rockville, MD 20850, USA

\* CE IVD only available in certain countries. All other countries are either ASR or RUO. Please contact your local dealer or our headquarters for more information.

**India Contact:**

**Life Technologies (India) Pvt. Ltd.**

306, Aggarwal City Mall, Opposite M2K Pitampura, Delhi – 110034 (INDIA). Ph: +91-11-42208000, 42208111, 42208222, Mobile: +91-9810521400, Fax: +91-11-42208444

Email: [customerservice@lifetechindia.com](mailto:customerservice@lifetechindia.com) Website: [www.lifetechindia.com](http://www.lifetechindia.com)