

BCR-ABL1/ASS1 Tri-color Fusion/Translocation FISH Probe Kit

Introduction

The BCR-ABL1/ASS1 Tri-color Fusion/Translocation FISH Probe Kit is designed to detect rearrangements involving the human *BCR*, *ABL1* and *ASS1* genes located on chromosome bands 22q11.23, 9q34.12 and 9q34.11, respectively. A reciprocal translocation between the two regions is present in virtually all cases of chronic myelocytic leukemia (CML), but also occurs in a subset of pediatric and adult acute lymphocytic leukemias (ALL), acute myelogenous leukemia (AML) and other malignancies.

Intended Use

To detect rearrangements involving the human *BCR*, *ABL1* and *ASS1* genes located on chromosome bands 22q11.23, 9q34.12 and 9q34.11, respectively.

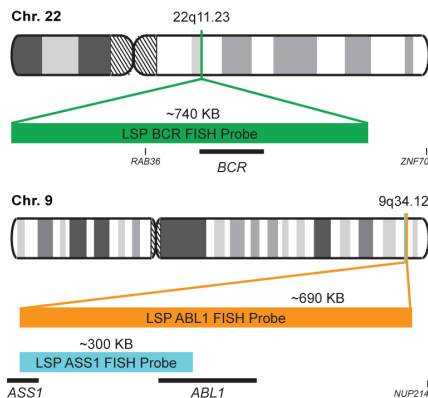
Cont.

LSP BCR FISH Probe
LSP ABL1 FISH Probe
LSP ASS1 FISH Probe

Color

CytoGreen
CytoOrange
CytoAqua

Probe Design



LSP BCR FISH Probe covers the entire *BCR* gene along with some upstream (5') and downstream (3') flanking untranslated genomic sequences; the probe overlaps the known major and minor breakpoints observed in the region. LSP ABL1 FISH Probe spans the complete *ABL1* gene, including the common breakpoint region upstream of exon 2, as well as adjacent 5' and 3' untranslated genomic sequences. LSP ASS1 FISH Probe covers the *ASS1* gene and some genomic sequences adjacent to the 3' end of the gene. The probe set is optimized to reveal the typical t(9;22)(q34;q11) translocation in metaphase and interphase blood or bone marrow cells.

Cat. No.

CT-PAC110-10-GOA

Volume

10 Tests (100 µL)

Signal Pattern Interpretation

Normal Pattern

2O + 2G + 2A*

Abnormal Pattern

Other Patterns

*Overlapping orange and green signals can appear as yellow.

- 1) Ernst T, et al. *Hematol Oncol Clin North Am.* 25(5):997-1008, v-vi (2011).
- 2) Nowell PC, Hungerford DA. *J Natl Cancer Inst.* 25:85-109 (1960).
- 3) Rowley JD. *Nature.* 243(5405):290-3 (1973).
- 4) Landstrom AP & Tefferi A. *Leuk Lymphoma.* 47(3):397-402 (2006).
- 5) Druker BJ, et al. *N Engl J Med.* 355(23):2408-17 (2006).



CytoTest Inc.
9430 Key West Ave., Suite 210
Rockville, MD 20850, USA

* CE IVD only available in certain countries. All other countries are either ASR or RUO. Please contact your local dealer or our headquarters for more information.

India Contact:

Life Technologies (India) Pvt. Ltd.

306, Aggarwal City Mall, Opposite M2K Pitampura, Delhi – 110034 (INDIA). Ph: +91-11-42208000, 42208111, 42208222, Mobile: +91-9810521400, Fax: +91-11-42208444
Email: customerservice@lifetechindia.com Website: www.lifetechindia.com