

## CRLF2 Break Apart FISH Probe Kit

### Introduction

The CRLF2 Break Apart FISH Probe Kit is designed to detect rearrangements in the human *CRLF2* gene located on chromosome bands Xp22.23 and Yp11.23. In addition to revealing breaks, which can lead to translocation of parts of the gene, inversion, or its fusion to other genes, the probe set can also be used to identify other *CRLF2* aberrations such as deletions or amplifications. Rearrangements and abnormal expression of the *CRLF2* gene – also known as *CRL2*, *TSLPR* or *CRLF2Y* – have been observed in adult and pediatric acute lymphoblastic leukemia (ALL) and various other malignancies.

### Intended Use

To detect rearrangements in the human *CRLF2* gene located on chromosome bands Xp22.23 and Yp11.23.

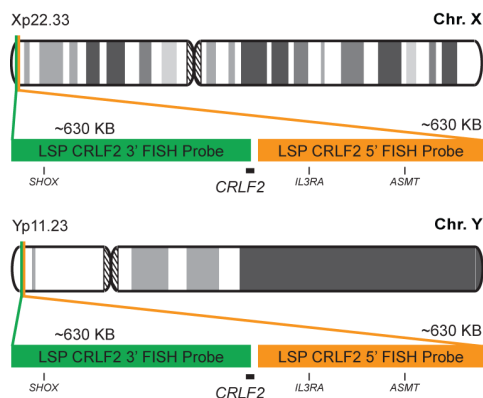
### Cont.

LSP CRLF2 5' FISH Probe  
LSP CRLF2 3' FISH Probe

### Color

CytoOrange  
CytoGreen

### Probe Design



The human *CRLF2* gene locates on both chromosome X and Y. LSP CRLF2 5' FISH Probe covers some genomic sequences adjacent to the 5' end of the *CRLF2* gene. LSP CRLF2 3' FISH Probe covers the 3' part as well as sequences downstream of the gene. The two probes are flanking sequences across the *CRLF2* gene in which variable breakpoints have been observed.

### Cat. No.

CT-PAC114-10-OG

### Volume

10 Tests (100 µL)

### Signal Pattern Interpretation

#### Normal Patterns

2F\*

#### Abnormal Patterns

Other Patterns

\*Overlapping orange and green signals can appear as yellow.

- 1) O'Connor C. *Nature Education*. 1(1):171 (2008).
- 2) Tsuchiya KD. *Clin Lab Med*. 31(4):525-42, vii-viii (2011).
- 3) Ried T, et al. *Hum Mol Genet*. 7(10):1619-26 (1998).
- 4) Tonozuka Y, et al. *Cytogenet Cell Genet*. 93(1-2):23-5 (2001).
- 5) Rand V, et al. *Blood*. 117(25):6848-55 (2011).



CytoTest Inc.  
9430 Key West Ave., Suite 210  
Rockville, MD 20850, USA

### India Contact:

#### Life Technologies (India) Pvt. Ltd.

306, Aggarwal City Mall, Road No. 44, Pitampura, Delhi – 110034, India

Mobile: +91-98105-21400, Tel: +91-11-42208000, 8111, 8222, Fax: +91-11-42208444

Email: [customerservice@lifetechindia.com](mailto:customerservice@lifetechindia.com), [www.atzlabs.com](http://www.atzlabs.com); [www.lifetechindia.com](http://www.lifetechindia.com)