

AR/CCPX FISH Probe Kit

Introduction

The AR/CCPX FISH Probe Kit is designed to detect the human androgen receptor (*AR*) gene located on chromosome band Xq12, along with the number of chromosome X copies per cell. Abnormal expression of the *AR* gene – also known as *TFM*, *SMAX1*, *SBMA*, *NR3C4*, *KD*, *HYSP1*, *HUMARA*, *DHTR*, *AR8* or *AIS* – has been observed in Androgen insensitivity syndrome (AIS), spinal and bulbar muscular dystrophy (Kennedy disease), benign prostatic hyperplasia, prostate adenocarcinoma and other malignancies.

Intended Use

To measure the copy number of the human *AR* gene located on chromosome band Xq12.

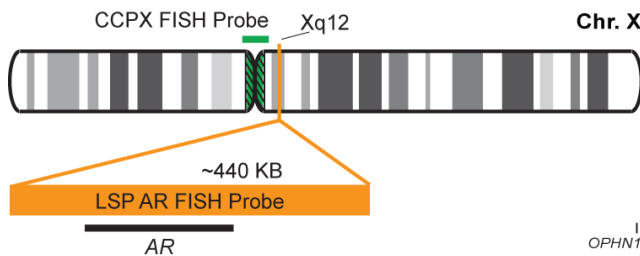
Cont.

LSP AR FISH Probe
CCPX FISH Probe

Color

CytoOrange
CytoGreen

Probe Design



Not to Scale

LSP AR FISH Probe covers a chromosomal region which includes the entire *AR* gene. CCPX FISH Probe, derived from chromosome X-specific alpha satellite DNA, is designed to serve as a control to determine the number of chromosome X copies per cell.

Cat. No.

CT-PAC116-10-OG

Volume

10 Tests (100 µL)

Signal Pattern Interpretation

Normal Patterns

1O1G (Male)
2O2G (Female)

Abnormal Patterns

Other Patterns

- 1) Abate-Shen C & Shen MM. *Genes Dev.* 14(19):2410-34 (2000).
- 2) Shang Y, et al. *Mol Cell.* 9(3):601-10 (2002).
- 3) Litvinov IV, et al. *J Clin Endocrinol Metab.* 88(7):2972-82 (2003).
- 4) Cunha GR, et al. *J Steroid Biochem Mol Biol.* 92(4):221-36 (2004).
- 5) Mizokami A, et al. *Cancer Res.* 64(2):765-71 (2004).



CytoTest Inc.
9430 Key West Ave., Suite 210
Rockville, MD 20850, USA

* CE IVD only available in certain countries. All other countries are either ASR or RUO. Please contact your local dealer or our headquarters for more information.

Life Technologies (India) Pvt. Ltd.

306, Aggarwal City Mall, Road No. 44, Pitampura, Delhi – 110034, India
Mobile: +91-98105-21400, Tel: +91-11-42208000, 8111, 8222, Fax: +91-11-42208444
Email: customerservice@lifetechindia.com, www.atzlabs.com ; www.lifetechindia.com