

## FGFR1/CCP8 FISH Probe Kit

### Introduction

The FGFR1/CCP8 FISH Probe Kit is designed to detect the human *FGFR1* gene located on chromosome band 8p11.23, along with the number of chromosome 8 copies per cell. Abnormal expression or rearrangements of the *FGFR1* gene – also known as *CEK*, *FLG*, *HH2*, *OGD*, *FLT2*, *KAL2*, *BFGFR*, *CD331*, *FGFBR*, *FLT-2*, *HBGFR*, *N-SAM*, *FGFR-1*, *HRTFDS* or *bFGF-R-1* – have been observed in a large number of hematological and solid tumor types, and other conditions.

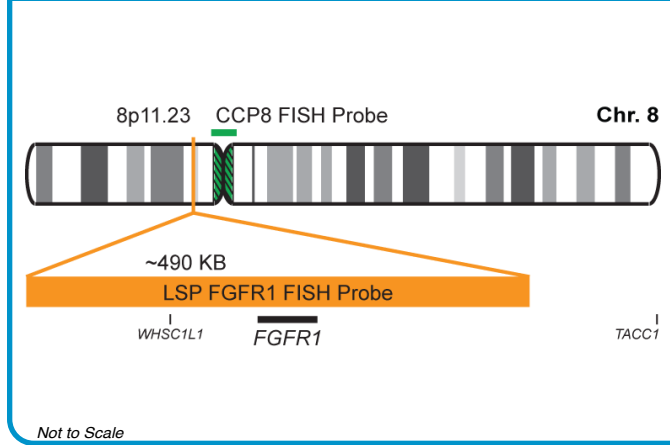
### Intended Use

To measure the copy number of the human *FGFR1* gene located on chromosome band 8p11.23.

Cont.	Color
-------	-------

LSP FGFR1 FISH Probe CCP8 FISH Probe	CytoOrange CytoGreen
---	-------------------------

### Probe Design



LSP FGFR1 FISH Probe covers a chromosomal region which includes the entire *FGFR1* gene. CCP8 FISH Probe, derived from chromosome 8-specific alpha satellite DNA, is designed to serve as a control to determine the number of chromosome 8 copies per cell.

Cat. No.	Volume
----------	--------

CT-PAC130-10-OG	10 Tests (100 µL)
-----------------	-------------------

### Signal Pattern Interpretation

Normal Patterns	Abnormal Patterns
2O2G	Other Patterns

- 1) Elbauomy Elsheikh S, et al. *Breast Cancer Res.* 9(2):R23 (2007).
- 2) Freier K, et al. *Oral Oncol.* 43(1):60-6 (2007).
- 3) Sahadevan K, et al. *J Pathol.* 213(1):82-90 (2007).
- 4) Sugiura K, et al. *Oncol Rep.* 2007 Mar;17(3):557-64 (2007).
- 5) Park TS, et al. *Cancer Genet Cytogenet.* 181(2):93-9 (2008).



\* CE IVD only available in certain countries. All other countries are either ASR or RUO. Please contact your local dealer or our headquarters for more information.