

TMPRSS2 Break Apart FISH Probe Kit

Introduction

The TMPRSS2 Break Apart FISH Probe Kit is designed to detect rearrangements in the human *TMPRSS2* gene located on chromosome band 21q22.3. In addition to revealing breaks, which can lead to translocation of parts of the gene, inversion, or its fusion to other genes, the probe set can also be used to identify other *TMPRSS2* aberrations such as deletions or amplifications. Rearrangements and abnormal expression of the *TMPRSS2* gene – also known as *PP9284* or *PRSS10* – have been observed in prostate cancer and other malignancies.

Intended Use

To detect rearrangements in the human *TMPRSS2* gene located on chromosome band 21q22.3.

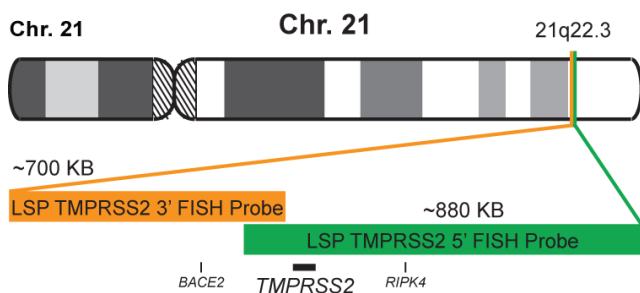
Cont.

LSP TMPRSS2 5' FISH Probe
LSP TMPRSS2 3' FISH Probe

Color

CytoGreen
CytoOrange

Probe Design



Not to Scale

LSP TMPRSS2 5' FISH Probe covers the entire *TMPRSS2* gene, the 5' (start) portion of the gene and some adjacent genomic sequences; it also covers some sequences adjacent to the 3' portion of the gene. LSP TMPRSS2 3' FISH Probe covers sequences downstream of the 3' end of the gene. The two probes are flanking sequences across the *TMPRSS2* gene in which variable breakpoints have been observed.

Cat. No.

CT-PAC154-10-GO

Volume

10 Tests (100 µL)

Signal Pattern Interpretation

Normal Pattern

2OG*

Abnormal Pattern

Other Patterns

*Overlapping orange and green signals can appear as yellow.

- 1) Paoloni-Giacobino A, et al. *Genomics*. 44(3):309-20 (1997).
- 2) Vaarala MH, et al. *Int J Cancer*. 94(5):705-10 (2001).
- 3) Vaarala MH, et al. *J Pathol*. 193(1):134-40 (2001).
- 4) Choi SY, et al. *Trends Mol Med*. 15(7):303-12 (2009).
- 5) Barwick BG, et al. *Br J Cancer*. 102(3):570-6 (2010).



CytoTest Inc.
9430 Key West Ave., Suite 210
Rockville, MD 20850, USA

* CE IVD only available in certain countries. All other countries are either ASR or RUO. Please contact your local dealer or our headquarters for more information.

India Contact:

Life Technologies (India) Pvt. Ltd.

306, Aggarwal City Mall, Opposite M2K Pitampura, Delhi – 110034 (INDIA). Ph: +91-11-42208000, 42208111, 42208222, Mobile: +91-9810521400, Fax: +91-11-42208444
Email: customerservice@lifetechindia.com Website: www.lifetechindia.com