

D20S108/CCP9 FISH Probe Kit

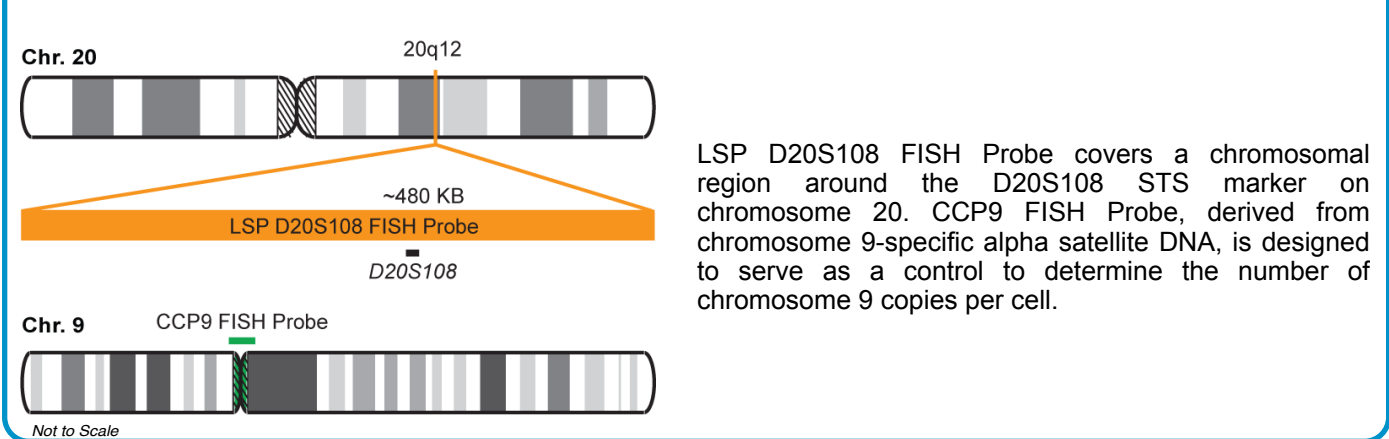
Introduction

The D20S108/CCP9 FISH Probe Kit is designed to detect the human D20S108 STS marker regions located on chromosome band 20q12, along with the number of chromosome 9 copies per cell. Abnormalities in the D20S108 region are frequently found in myelodysplastic syndrome (MDS), acute myeloid leukemia (AML) and other myeloid disorders. Trisomy 9 occurs in a large spectrum of hematological malignancies.

Intended Use
To measure the copy number of the human D20S108 STS marker region located on chromosome band 20q12.

Cont.	Color
LSP D20S108 FISH Probe CCP9 FISH Probe	CytoOrange CytoGreen

Probe Design



Cat. No.	Volume
CT-PAC158-10-OG	10 Tests (100 µL)

Signal Pattern Interpretation	
<u>Normal Pattern</u> 20 + 2G	<u>Abnormal Pattern</u> Other Patterns

- O'Connor C. *Nature Education*. 1(1):171 (2008).
- Ried T, et al. *Hum Mol Genet*. 7(10):1619-26 (1998).
- Smoley SA, et al. *Cancer Genet Cytogenet*. 173(2):144-9 (2007).
- Kwon WK, et al. *Korean J Hematol*. 45(3):171-6 (2010).
- White JS, et al. *Cancer Genet*. 2012 Dec;205(12):644-52 (2012).



CytoTest Inc.
9430 Key West Ave., Suite 210
Rockville, MD 20850, USA

* CE IVD only available in certain countries. All other countries are either ASR or RUO. Please contact your local dealer or our headquarters for more information.

India Contact:

Life Technologies (India) Pvt. Ltd.

306, Aggarwal City Mall, Opposite M2K Pitampura, Delhi – 110034 (INDIA). Ph: +91-11-42208000, 42208111, 42208222, Mobile: +91-9810521400, Fax: +91-11-42208444
Email: customerservice@lifetechindia.com Website: www.lifetechindia.com