

RB1/CCP11 FISH Probe Kit

Introduction

The RB1/CCP11 FISH Probe Kit is designed to detect the human *RB1* gene located on chromosome band 13q14.2, along with the number of chromosome 11 copies per cell. Abnormal expression of the *RB1* gene – also known as *RB*, *pRb*, *OSRC*, *pp110*, *p105-Rb* or *PPP1R130* – and aneuploidy of the chromosome 11 have been observed in retinoblastoma, sarcomas and various other heritable and somatic tumor types. Concurrent deletions of *RB1* and the 11q chromosome arm are frequent in some B-cell lymphomas.

Intended Use

To measure the copy number of the human chromosome 11 and *RB1* gene located on chromosome band 13q14.2.

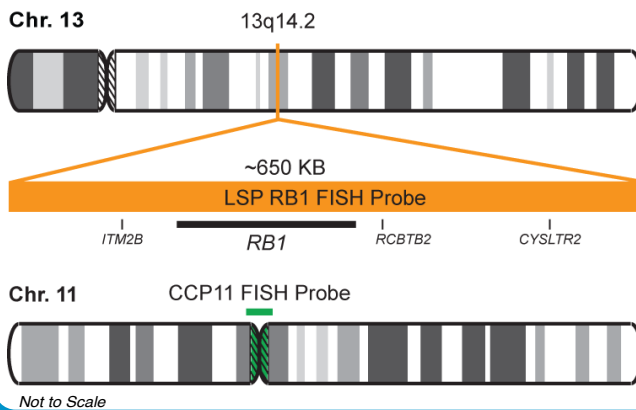
Cont.

LSP RB1 FISH Probe
CCP11 FISH Probe

Color

CytoOrange
CytoGreen

Probe Design



LSP RB1 FISH Probe covers a chromosomal region which includes the entire *RB1* gene. CCP11 FISH Probe, derived from chromosome 11-specific alpha satellite DNA, is designed to determine the number of chromosome 11 copies per cell.

Cat. No.

CT-PAC198-10-OG

Volume

10 Tests (100 µL)

Signal Pattern Interpretation

Normal Pattern

2O + 2G

Abnormal Pattern

Other Patterns

- 1) Toguchida J, et al. *Genomics*. 17(3):535-43 (1993).
- 2) Weinberg RA. *Cell*. 81(3):323-30 (1995).
- 3) Taya Y. *Trends Biochem Sci*. 22(1):14-7 (1997).
- 4) Tsimberidou AM, et al. *Cancer*. 115(2):373-80 (2009).
- 5) Caraway NP, et al. *Cancer*. 2008 Oct 25;114(5):315-22 (2008).



CytoTest Inc.
9430 Key West Ave., Suite 210
Rockville, MD 20850, USA

Life Technologies (India) Pvt Ltd.

306, Agarwal City Mall, Road 44, Pitampura, Delhi - 110034 (India)
Tel: +91-11-4220-8000; 4220-8111; 4220-8222 Fax: +91-11-4220-8444, Mobile: +91-98105-21400
Email - customerservice@lifetechindia.com | customerservice@atzlabs.com