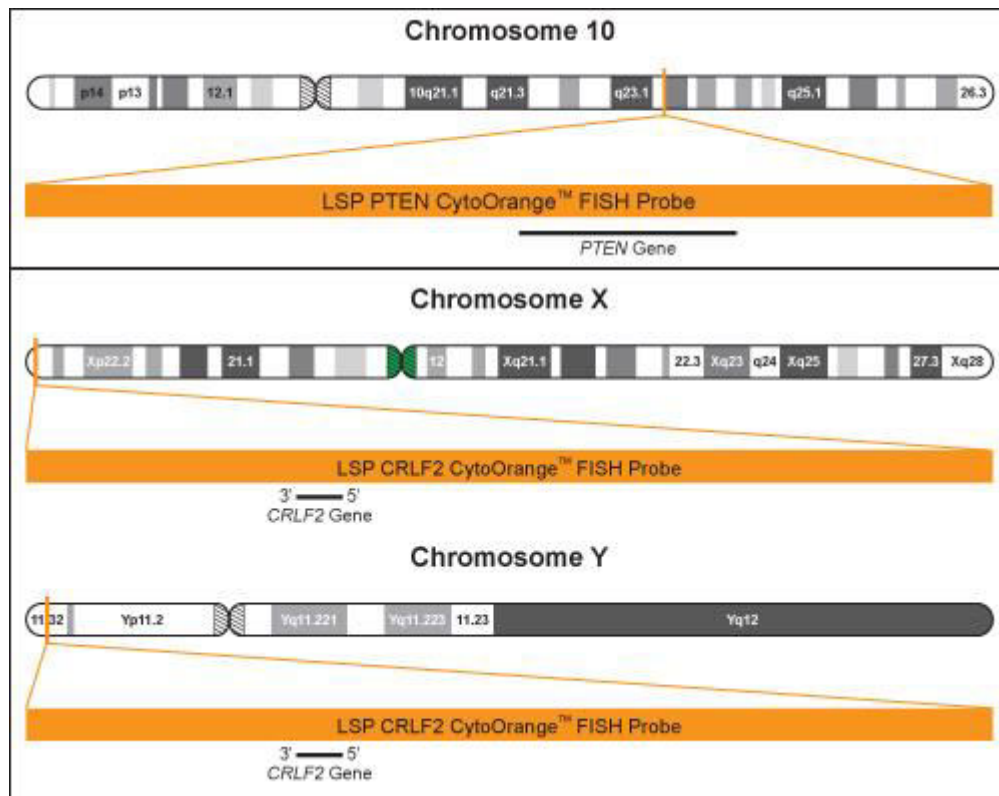


CRLF2/CCPX FISH Probe Kit Cat No CT-PAC252

Adult and Pediatric Lymphoblastic Leukemia (ALL) & Other Malignancies Diagnostic Kit

The CRLF2/CCPX FISH probe set is designed to detect copy number changes in the region of the human *CKS1B* gene; the gene located on both the X (Xp22.33) and Y (Yp11.32) chromosome. It lies near the end of the p-arm, in the pseudoautosomal region (PAR1) in which the sequence of the X and Y chromosome are identical. The kit contains two differentially labeled probes: A Locus Specific Probe (LSP) covers two chromosomal regions which includes the entire *CRLF2* gene. The other probe, CCPX, is derived from chromosome X-specific pericentromeric DNA and is designed to serve as a control to determine the number of chromosome X copies per cell.



The probe is labeled with CytoOrange and CytoGreen. CytoOrange is a fluorophore with an excitation peak at 551 nm and emission peak at 575 nm, giving it an orange fluorescent signal with an appropriate filter; CytoGreen has an excitation peak at 495 nm and emission peak at 518 nm, giving it an green fluorescent signal with an appropriate filter.

* CytoTest shall not be responsible for patent infringement or any other violation that may occur with the use of this product.