

# BCR-ABL1 Fusion/Translocation FISH Probe Kit

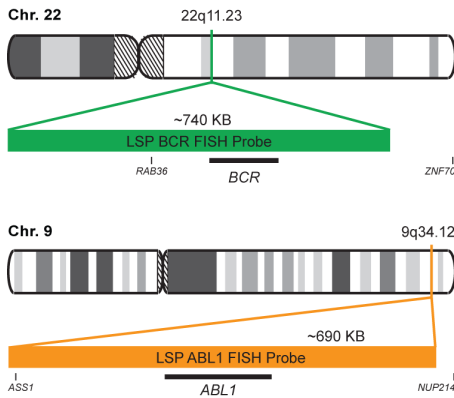
## Introduction

The BCR-ABL1 Fusion/Translocation FISH Probe Kit is designed to detect rearrangements involving the human *BCR* and *ABL1* genes located on chromosome bands 22q11.23 and 9q34.12, respectively. A reciprocal translocation between the two genes is present in virtually all cases of chronic myelocytic leukemia (CML), but also occurs in a subset of pediatric and adult acute lymphocytic leukemias (ALL), acute myelogenous leukemia (AML) and other malignancies.

Intended Use
To detect rearrangements involving the human <i>BCR</i> and <i>ABL1</i> genes located on chromosome bands 22q11.23 and 9q34.12, respectively.

Cont.	Color
LSP BCR FISH Probe LSP ABL1 FISH Probe	CytoGreen CytoOrange

## Probe Design

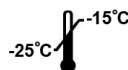


LSP BCR FISH Probe covers the entire *BCR* gene along with some upstream (5') and downstream (3') flanking untranslated genomic sequences; the probe overlaps the known major and minor breakpoints observed in the region. LSP ABL1 FISH Probe spans the complete *ABL1* gene, including the common breakpoint region upstream of exon 2, as well as adjacent 5' and 3' untranslated genomic sequences. The probe set is optimized to reveal the typical t(9;22)(q34;q11) translocation as well as other translocations between the two genes in metaphase and interphase blood or bone marrow cells.

Cat. No.	Volume
CT-PAC302-10-GO	10 Tests (100 µL)

Signal Pattern Interpretation	
<u>Normal Pattern</u> 2O + 2G*	<u>Abnormal Pattern</u> Other Patterns
*Overlapping orange and green signals can appear as yellow.	

- Ernst T, et al. *Hematol Oncol Clin North Am.* 25(5):997-1008, v-vi (2011).
- Nowell PC, Hungerford DA. *J Natl Cancer Inst.* 25:85-109 (1960).
- Rowley JD. *Nature.* 243(5405):290-3 (1973).
- Landstrom AP & Tefferi A. *Leuk Lymphoma.* 47(3):397-402 (2006).
- Druker BJ, et al. *N Engl J Med.* 355(23):2408-17 (2006).



CytoTest Inc.  
9430 Key West Ave., Suite 210  
Rockville, MD 20850, USA

\* CE IVD only available in certain countries. All other countries are either ASR or RUO. Please contact your local dealer or our headquarters for more information.

**India Contact:**

**Life Technologies (India) Pvt. Ltd.**

306, Aggarwal City Mall, Opposite M2K Pitampura, Delhi – 110034 (INDIA). Ph: +91-11-42208000, 42208111, 42208222, Mobile: +91-9810521400, Fax: +91-11-42208444  
Email: [customerservice@lifetechindia.com](mailto:customerservice@lifetechindia.com) Website: [www.lifetechindia.com](http://www.lifetechindia.com)