

ETV6-RUNX1 Fusion/Translocation FISH Probe Kit

Introduction

The ETV6-RUNX1 Fusion/Translocation FISH Probe Kit is designed to detect rearrangements involving the human *ETV6* and *RUNX1* genes located on chromosome bands 12p13.2 and 21q22.12, respectively. Rearrangements between the two genes, the *ETV6* gene – also called *TEL*, *THC5* or *TEL/ABL* – and the *RUNX1* gene – also known as *AML1*, *AML1-EVI-1*, *AMLCR1*, *CBFA2*, *EVI-1* or *PEBP2aB*, have been observed in B-cell acute lymphocytic leukemia (ALL) and other malignancies.

Intended Use

To detect rearrangements involving the human *ETV6* and *RUNX1* genes located on chromosome bands 12p13.2 and 21q22.12, respectively.

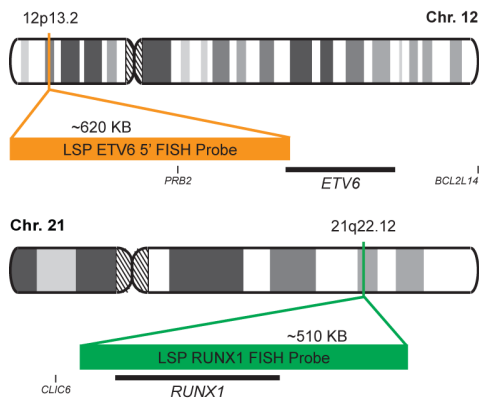
Cont.

LSP ETV6 5' FISH Probe
LSP RUNX1 FISH Probe

Color

CytoOrange
CytoGreen

Probe Design



LSP ETV6 5' FISH Probe covers the 5' (start) portion of the *ETV6* gene and some adjacent genomic sequences. LSP RUNX1 FISH Probe covers a chromosomal region which includes the entire *RUNX1* gene. The probe set is optimized to reveal translocations between the two gene regions.

Cat. No.

CT-PAC305-10-OG

Volume

10 Tests (100 µL)

Signal Pattern Interpretation

Normal Pattern

2O + 2G*

Abnormal Pattern

Other Patterns

*Overlapping orange and green signals can appear as yellow.

- 1) Nucifora G & Rowley JD. *Blood*. 86(1):1-14 (1995).
- 2) Cleary ML. *Nat Genet*. 23(2):134-5 (1999).
- 3) Richkind K, et al. *Cancer Genet Cytogenet*. 122(2):141-3 (2000).
- 4) Michaud J, et al. *Blood*. 99(4):1364-72 (2002).
- 5) Mikhail FM, et al. *Cancer Genet Cytogenet*. 135(1):96-100 (2002).



CytoTest Inc.
9430 Key West Ave., Suite 210
Rockville, MD 20850, USA

* CE IVD only available in certain countries. All other countries are either ASR or RUO. Please contact your local dealer or our headquarters for more information.

India Contact:

Life Technologies (India) Pvt. Ltd.

306, Aggarwal City Mall, Opposite M2K Pitampura, Delhi – 110034 (INDIA). Ph: +91-11-42208000, 42208111, 42208222, Mobile: +91-9810521400, Fax: +91-11-42208444
Email: customerservice@lifetechindia.com Website: www.lifetechindia.com