

AFF1 Break Apart FISH Probe Kit

Introduction

The AFF1 Break Apart FISH Probe Kit is designed to detect rearrangements in the human *AFF1* gene located on chromosome band 4q21.3. In addition to revealing breaks, which can lead to translocation of parts of the gene, inversion, or its fusion to other genes, the probe set can also be used to identify other *AFF1* aberrations such as deletions or amplifications. Rearrangements and abnormal expression of the *AFF1* gene – also known as *AF4*, *PBM1* or *MLLT2* – have been observed in B-cell acute lymphocytic leukemias and numerous other hematological malignancies.

Intended Use

To detect rearrangements in the human *AFF1* gene located on chromosome band 4q21.3.

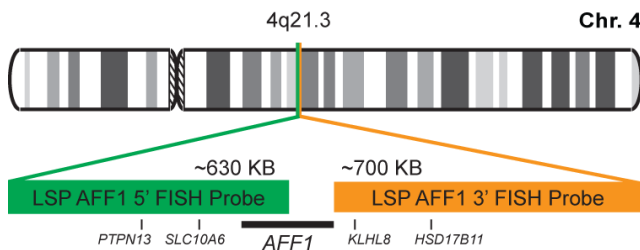
Cont.

LSP AFF1 5' FISH Probe
LSP AFF1 3' FISH Probe

Color

CytoGreen
CytoOrange

Probe Design



Not to Scale

LSP AFF1 5' FISH Probe covers the 5' (start) portion of the *AFF1* gene and some adjacent genomic sequences. LSP AFF1 3' FISH Probe covers the 3' (end) part as well as sequences downstream of the gene. The two probes are flanking a region in the *AFF1* gene in which variable breakpoints have been observed.

Cat. No.

CT-PAC330-10-GO

Volume

10 Tests (100 µL)

Signal Pattern Interpretation

Normal Pattern

2OG*

Abnormal Pattern

Other Patterns

*Overlapping orange and green signals can appear as yellow.

- 1) Gu Y, et al. *Cell*. 71(4):701-8 (1992).
- 2) Young BD & Saha V. *Cancer Surv.* 28:225-45 (1996).
- 3) Bernard OA & Berger R. *Genes Chromosomes Cancer*. 13(2):75-85 (1995).
- 4) Rubnitz JE, et al. *Leukemia*. 10(1):74-82 (1996).
- 5) Nilson I, et al. *Br J Haematol*. 98(1):157-69 (1997).



CytoTest Inc.
9430 Key West Ave., Suite 210
Rockville, MD 20850, USA

* CE IVD only available in certain countries. All other countries are either ASR or RUO. Please contact your local dealer or our headquarters for more information.

India Contact:

Life Technologies (India) Pvt. Ltd.

306, Aggarwal City Mall, Opposite MZK Pitampura, Delhi – 110034 (INDIA). Ph: +91-11-42208000, 42208111, 42208222, Mobile: +91-9810521400, Fax: +91-11-42208444
Email: customerservice@lifetechindia.com Website: www.lifetechindia.com