

LL-37

Best in Class in Antibody, Peptide & ELISA



ELISA specifications

- Robust, Reliable & Reproducible
- Inter- & Intra variation < 10%
- All components tested separately for variability and stability
- Specific for human: no cross reaction with bovine, dog, horse, sheep, goat, mouse, pig, rabbit & rat
- > 200 Publications
- Suitable for sputum, plasma and cell culture supernatant samples
- Cat# HK321-01 and HK321-02

Antibody & Peptide Specifications

- In house production & QC testing of each batch
- Applications FS IF P W (cat# HM2070) and IA IF P W (cat# HM2071)
- Available in Functional Study Antibody Format: 0.5 mg PBS-only (HM2070-FS)
- Low endotoxin antibodies
- Also available in other bulk formats (>1mg) or with specific label
- Up-to-date publications
- Human LL-37/CAP-18 peptide (cat# HC4013)

Donor	Sample	Concentration (ng/ml)
Sample 1	Serum	132
	EDTA	126
	Citrate	116
	Heparin	102
Sample 2	Serum	79
	EDTA	58
	Citrate	51
	Heparin	59
Sample 3	Serum	65
	EDTA	28
	Citrate	21
	Heparin	24
Sample 4	Serum	72
	EDTA	49
	Citrate	23
	Heparin	40
Sample 5	Serum	80
	EDTA	64
	Citrate	55
	Heparin	45
Sample 6	Serum	89
	EDTA	79
	Citrate	61
	Heparin	58

Fig. 1a

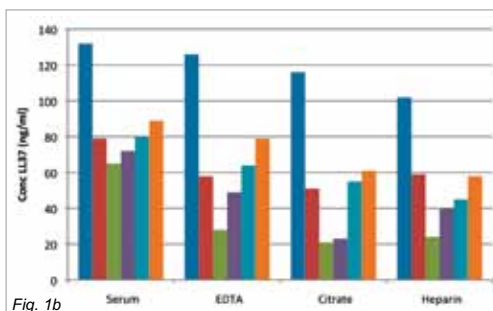


Fig. 1b

Figure 1a and 1b: Result of concentrations of LL-37 in serum and plasma types (EDTA, citrate and heparin) for 1 donor with 6 different donors in total.

Inter variation	CV	Intra variation	CV
Plate 1	4,2	Random strips from different plates	3,6
Plate 2	4,1		
Plate 3	4,4		
Plate 4	5,6		

Figure 2: Inter- and Intra-variation randomly chosen LL-37 ELISA batch.

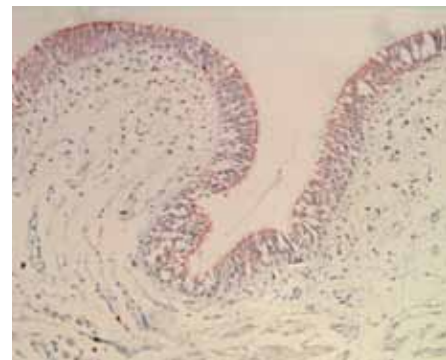
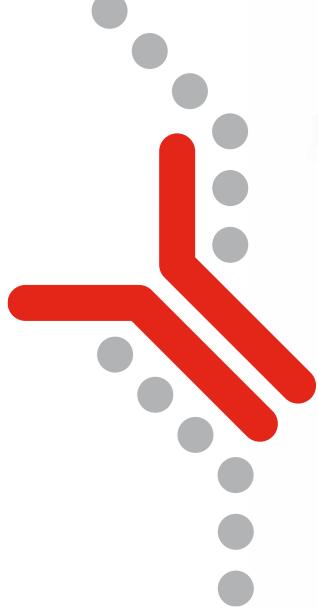


Figure 3: Human Kidney paraffin sections with mAb 3D11 (cat# HM2070)



LL-37

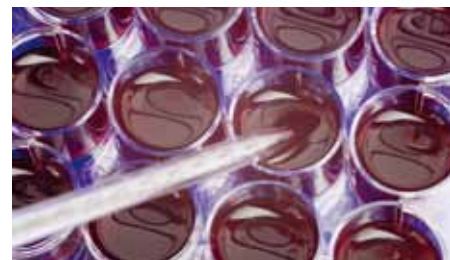
Best in Class in Antibody, Peptide & ELISA

LL-37

- Predominantly found in the peroxidase-negative granules of neutrophils
- Stored in granules as inactive proforms and activated when cleaved from the proforms of cathelicidins
- Broad antimicrobial activity towards gram-negative as well as gram-positive bacteria
- Chemotactic agent for neutrophils, monocytes and T cells
- Present in plasma in levels from 25 - 250 ng/ml and enhanced in infectious diseases

Diseases

- The effect of human antibacterial peptide LL-37 in the pathogenesis of **chronic obstructive pulmonary disease**. (Jiang, Respiratory Medicine 2012)
- Effects of vitamin D and the antimicrobial peptide in **asthma**. (Albanna, Egypt J Pediatr Allergy Immunol 2012)
- Novel mechanism for hCAP18/LL-37 expression involving **tumor-macrophage interaction**. (Di, PlosOne 2013)
- Plasma LL-37 level showed significant correlations with HDL cholesterol, triglyceride and high sensitive C-reactive protein in patients with **diabetes mellitus type 2**. (Meguro, Int J Endocrinology 2014)



Why scientists buy our products:

- Unique products · Sensitivity · Specificity · Easy to use · Value for money · 1- & 2-plate kits · Functional studies · Technical support
- Standardized assays · Quality control · Inter/intra variation <10% · Well documented products · Broad in applications



Hycult Biotech BV
P.O. Box 30
5400 AA Uden
The Netherlands

T +31 413 25 13 35
F +31 413 24 83 53
E info@hycultbiotech.com

Hycult Biotech Inc
600 West Germantown Pike
Suite 110
Plymouth Meeting, PA 19462
USA

T: 1-484-534-3566 Toll Free: 855-2-HYCULT (855 249 2858)
F: 1-484-368-3558
E: orders-us@hycultbiotech.com

Hycult Biotech is distributed by:

India Contact:

Life Technologies (India) Pvt. Ltd. 306,
Aggarwal City Mall, Opposite M2K Pitampura, Delhi - 110034
(INDIA).
Ph: +91-11-42208000, 42208111, 42208222
Mobile: +91-9810521400
Fax: +91-11-42208444

Email: customerservice@lifetechnindia.com
Web: www.lifetechnindia.com