

## EndoFectin™ Transfection Reagents

### Efficient

Developed by GeneCopoeia for fast, efficient transfection of expression-ready constructs into a variety of cell lines, EndoFectin™ reagents offer researchers transfection solutions that are gentle on cells, simple to use and easy on budgets.

- ♦ High protein yields
- ♦ Low cell toxicity
- ♦ Less hands-on work
- ♦ More cost effective
- ♦ Big time savings

### Reproducible

EndoFectin transfection solutions provide consistently high transfection efficiencies, ensure healthy cells and deliver high levels of quality protein as well as reproducible results (Figure 1).

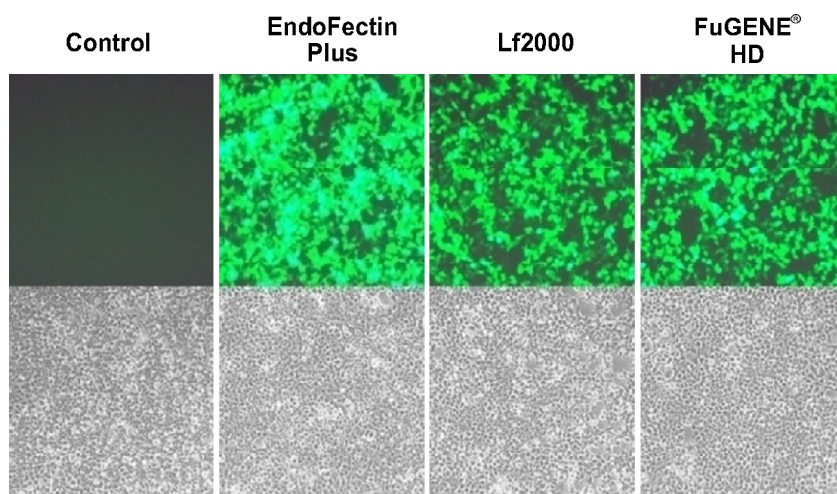


Figure 1. Highly efficient transfection. HEK293T cells in DMEM supplemented with 10% fetal bovine serum were transfected with an EGFP-expressing plasmid (GeneCopoeia EX-EGFP-Lv01) using the indicated reagents. The cells were observed with an inverted fluorescence microscope 20 hours after transfection.

**Find your Expressway to Discovery™ with EndoFectin™ transfection reagents.**

[Click Here for Protocol](#)

**GeneCopoeia EndoFectin transfection reagents provide real solutions for efficient transfection without high costs.**

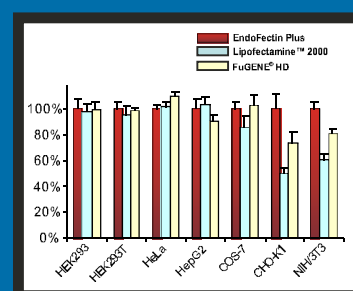
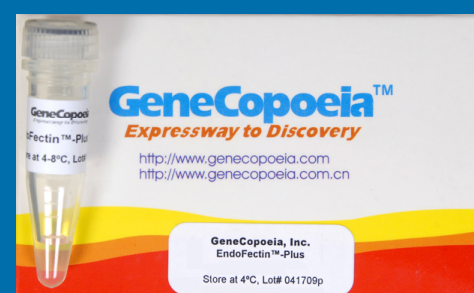


Figure 2. An eGFP-expressing plasmid was transfected into various cell lines using transfection reagents as indicated. Transfection efficiencies were assessed by measuring fluorescent intensities which were normalized against those produced by EndoFectin Plus.



## EndoFectin™ Transfection Reagents

### Advanced

When combined with GeneCopoeia high-quality expression ORF cDNA and lentivirus-based clones, EndoFectin Transfection Reagents can significantly improve protein expression.

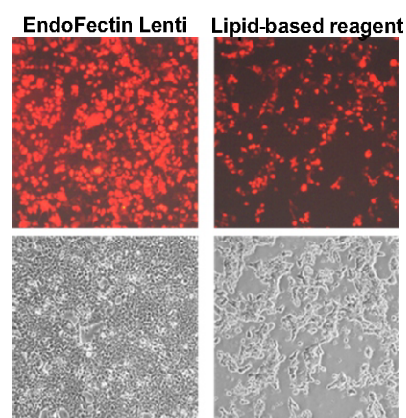


Figure 3. High titers for transduction. HEK293T packaging cells were transfected with GeneCopoeia EX-mCherry-Lv105 Lentivirus Vector (which encodes the mCherry fluorescent protein) and Lenti-Pac™ HIV Packaging Mix using either EndoFectin Lenti (left), or a leading lipid-based transfection reagent (right). Expression of mCherry and cell health were monitored 48 hours after transfection using fluorescence microscopy (top) and phase contrast microscopy (bottom). The lentivirus titer was over 20-fold higher with EndoFectin Lenti than with the lipid-based transfection reagent.

Product	Catalog Number	Contents
EndoFectin™ Lenti	EFL1001-01	1 ml
	EFL1001-02	5 ml
EndoFectin™ Plus	EFP1003-01	1 ml
	EFP1003-02	5 ml
EndoFectin™ CHO	EFC1002-01	1 ml
	EFC1002-02	5 ml

### To order

Tel: +91-11-4220-8000  
Fax: +91-11-4220-8444  
Cell: +91-98105-21400  
Email: customerservice@atzlabs.com  
Web: www.atzlabs.com

www.genecopoeia.com

**GeneCopoeia**  
EndoFectin transfection reagents provide transfection solutions optimized for specific cell types.

#### ● EndoFectin Plus

For a broad range of routinely used mammalian cells, including HEK293, CHO, COS, NIH/3T3 cells, and more

#### ● EndoFectin CHO

For Chinese hamster ovary cells

#### ● EndoFectin Lenti

For co-transfection of lentiviral expression constructs and plasmids into packaging cells to deliver high titers for lentivirus transduction