

ELISA Reagent Set for Cms

Test Label: Alkaline Phosphatase

Test Format: Double Antibody Sandwich (DAS) ELISA

Capture Reagent: Monoclonal

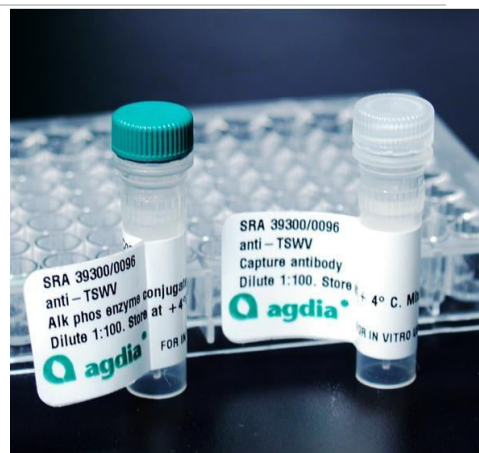
Detection Reagent: Polyclonal

Intended Use:

Agdia's Cms ELISA test is widely used for screening potato tuber lots for the presence of *Bacterial ring rot* (BRR). Composite samples are tested with up to 200 tuber cores per sample while still achieving reliable results.

Includes:

- Capture antibody
- Alkaline phosphatase enzyme conjugate
- 96-well microtiter plates, solid* (*strip in single plate set)
- [User Guide](#)



Reagent Set for *Clavibacter michiganensis* subsp. *sepedonicus* (Cms), 96 testwells, SRA 70002/0096

Reagent Set for *Clavibacter michiganensis* subsp. *sepedonicus* (Cms), 500 testwells, SRA 70002/0500

Reagent Set for *Clavibacter michiganensis* subsp. *sepedonicus* (Cms), 1000 testwells, SRA 70002/1000

Reagent Set for *Clavibacter michiganensis* subsp. *sepedonicus* (Cms), 5000 testwells, SRA 70002/5000

India Contact:

Life Technologies (India) Pvt. Ltd.

306, Aggarwal City Mall, Opposite M2K Pitampura, Delhi – 110034 (INDIA). Ph: +91-11-42208000, 42208111, 42208222, Mobile: +91-9810521400, Fax: +91-11-42208444
Email: customerservice@lifetechindia.com Website: www.lifetechindia.com