

# agdia<sup>®</sup> Tomato Diagnostics



**Authorized Distributor**



**Life Technologies (India) Pvt. Ltd.**

306, Agarwal City Mall, opposite M2K Pitampura

**City:** Delhi **Zip:** 110034

**Serving Country:** India **Phone:** +91-11-4220-8000

**Fax:** +91-11-4220-8444 **Web:** [www.atzlabs.com](http://www.atzlabs.com)

---

General questions about these products e-mail us  
at: [customerservice@atzlabs.com](mailto:customerservice@atzlabs.com) /  
[customerservice@lifetechindia.com](mailto:customerservice@lifetechindia.com)



# Tomato Diagnostics

## ELISA

- High-throughput testing.
- Economical.
- All reagent sets and PathoScreen kits are prepared and quality controlled to give you optimal results that are easy to interpret.
- Flexible protocol allows same day or overnight testing.

## ImmunoStrip

- Easy-to-use.
- Results can be obtained in minutes.
- One-year guaranteed shelf life.
- Can be used on various tissue types.

## Molecular

- Comprehensive: offers general and specific tests for the detection of hundreds of economically significant plant pathogens.
- Genus-level screening with species-level identification capabilities.
- Nucleic Acid Hybridization Assay: High-throughput and economical.
- Over 30 years of experience and support.

## Testing Services

Agdia Testing Services gives you a full range of diagnostic assays for the detection of plant pathogens. We have over 31 years experience in all agricultural sectors, worldwide, including ornamental, vegetable, fruit and field crops. We utilize many different technologies to meet each sectors' rigorous testing requirements in order to provide Agdia customers accurate results. Agdia Testing Services works closely with each customer, from researchers to diagnosticians and growers both in the greenhouse and field, to provide their results in the most cost effective and rapid way while maintaining customer confidentiality.

***Our basic crop screen is in bold italic.***



## ELISA

- Alfalfa mosaic virus (AMV)***
- Arabidopsis mosaic virus (ArMV)*
- Clavibacter michiganensis subsp. michiganensis (Cmm)***
- Cucumber mosaic virus (CMV)***
- Impatiens necrotic spot virus (INSV)***
- Peanut stunt virus (PSV)*
- Pectobacterium atrosepticum (Patro)***
- Pectobacterium carotovorum [Erwinia carotovora] (Pc)*
- Pelargonium zonate spot virus (PZSV)*
- Pepino mosaic virus (PepMV)***
- Pepper mottle virus (PepMoV)*
- Phytophthora (Phyt)*
- Potato leafroll virus (PLRV)*
- Potato virus X (PVX)***
- Potato virus Y (PVY)***
- Potyvirus group test (Poty)***
- Tobacco etch virus (TEV)***
- Tobacco mosaic virus (TMV)***
- Tobacco ringspot virus (TRSV)***
- Tobacco streak virus (TSV)*
- Tomato aspermy virus (TAV)***
- Tomato bushy stunt virus (TBSV)***
- Tomato chlorotic spot virus (TCSV)*
- Tomato mosaic virus (ToMV)***
- Tomato ringspot virus (ToRSV)***
- Tomato spotted wilt virus (TSWV)***
- Ribgrass mosaic virus (RMV)*
- Ralstonia (Pseudomonas) solanacearum (Rs)\**
- Raspberry ringspot virus (RpRSV)*
- Strawberry latent ringspot virus (SLRSV)*

**87601**  
23203  
**44001**  
**44501**  
**20500**  
44600  
**80003**  
90500  
TS  
**13001**  
38000  
92600  
30002  
**10000**  
**20001**  
**27200**  
**49501**  
**57400**  
**64001**  
25500  
**37001**  
**45400**  
TS  
**35400**  
**22001**  
**39300**  
57601  
33900  
59401  
TS



## ImmunoStrip

- Arabidopsis mosaic virus (ArMV)*
- Clavibacter michiganensis subsp. michiganensis (Cmm)*
- Cucumber mosaic virus (CMV)*
- Impatiens necrotic spot virus (INSV)*
- Pepino mosaic virus (PepMV)*
- Pepper mottle virus (PepMoV)*
- Phytophthora (Phyt)*
- Potato virus Y (PVY)*
- Tobacco mosaic virus (TMV)*
- Tomato spotted wilt virus (TSWV)*
- Ralstonia (Pseudomonas) solanacearum (Rs)\**

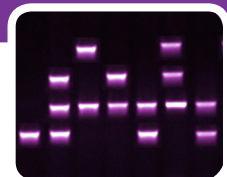
23203  
44001  
44501  
20500  
13000  
38000  
92601  
20001  
57400  
39300  
33900



## Molecular

- Beet curly top virus (BCTV)/Curtovirus group PCR (Curto)*
- Begomovirus group PCR (Begomo)*
- Carlavirus group PCR (Carla)*
- Luteovirus group PCR (Luteo)*
- Nepovirus group PCR (Nepo)*
- Phytoplasma PCR (Phyto)*
- Pospiviroid PCR test (Posp)*
- Potato spindle tuber viroid (PSTVd) NAK*
- Potexvirus group PCR (Potex)*
- Potyvirus group PCR (Poty)*
- Tobamovirus group PCR (Tobamo)*
- Tobacco rattle virus (TRV)\**

TS  
TS  
93000  
TS  
TS  
TS  
TS  
08000  
TS  
TS  
95100  
TS



TS = Available in Testing Services

*\*Please contact us before sending samples.*